

**Riviera International Academy**

**Assignment-2077**

**(Jestha 18, 2077, Sunday)**

**Class: Ten**

**Subject –Computer**

1) **Convert the following numbers as indicated:**

- a)  $1111110_2 = (?)_8$                       b)  $230_8 = (?)_2$   
c)  $1010101010_2 = (?)_{16}$                 d)  $2AB_{16} = (?)_2$

2) **Perform binary calculation:**

- a)  $1101 \times 110$                       b)  $10111 \div 11$

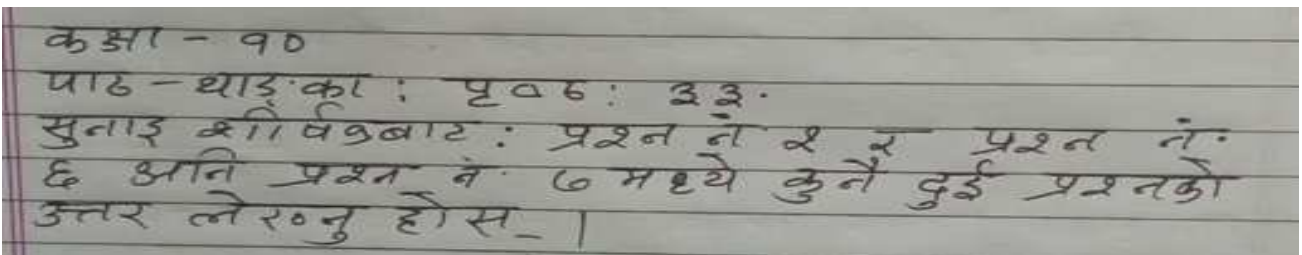
- 3) Write a program using SUB ..... END SUB to input the length and breadth of a rectangle and calculate its perimeter. [Hint: perimeter=2\*(length + breadth) ]  
4) Write a program using SUB ..... END SUB to input the radius of circle and print its perimeter. [Hint: perimeter=2 $\pi$ r ]  
5) Write a program using SUB ..... END SUB to input the base and height of a triangle and print its area. [Hint: area=1/2\*(base\*height) ]

**Subject- Science**

*(Dear students, read the class notes provided in Google Classroom to do the following questions)*

1. Define pressure. Write its SI unit.
2. On which factors pressure depends? Write the relation of pressure with these factors.
3. Why pressure is called scalar quantity? Write the differences between force and pressure.
4. Wheels of tractor are made wider, why?
5. Foundation of building is made wider, why?

**विषय – नेपाली**



**The End.**